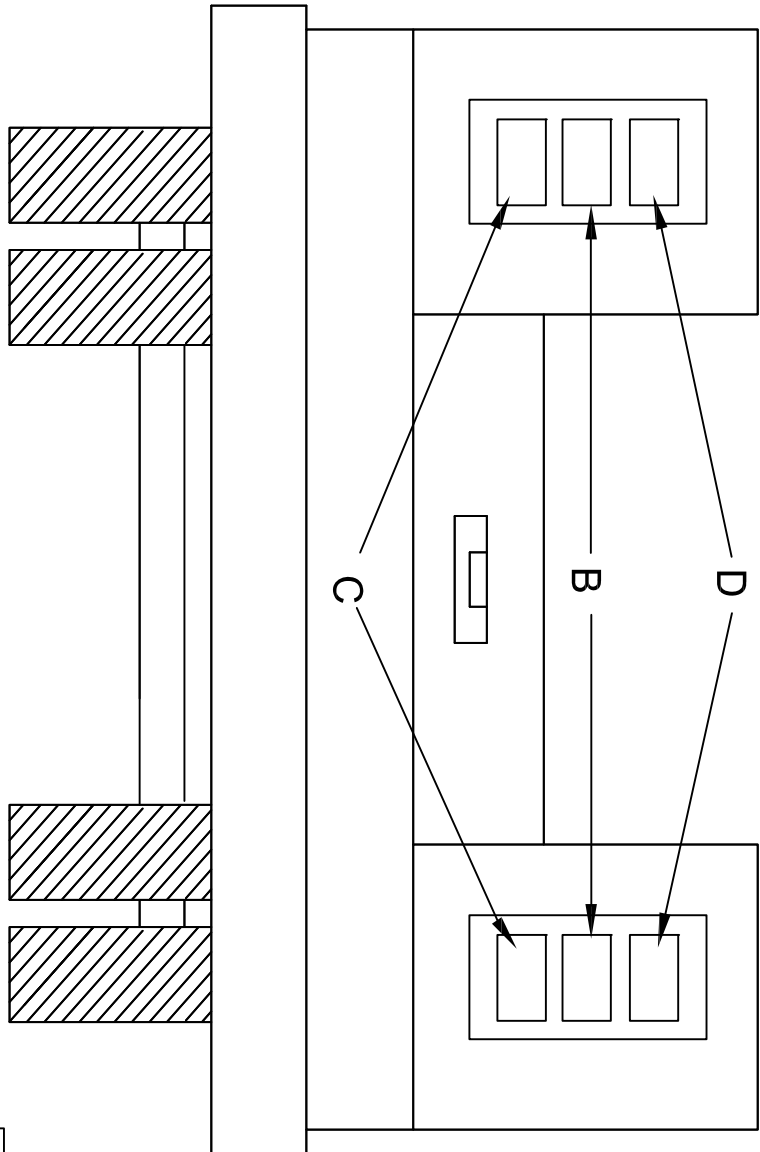


REAR VIEW

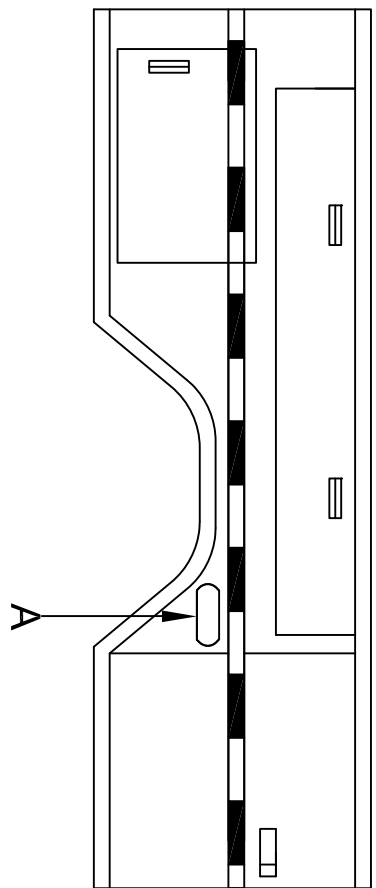


The purpose of this drawing is to show locations for Crew Cab Body Lighting, Whelen part # PADOTSYS5.

- A. TLIA Amber Warning Light, surface mounted, one each side.
- B. M6BUD Back up Lights.
- C. M5BTDD Stop / Tail / Turn Lights.
- D. M6AD Amber Warning Lights.

Note: Items B, C, & D are Flush mounted in Black Flange Housing #11-486152-000.

Curb Side



PA DEPARTMENT OF TRANSPORTATION

Crew Cab Body Lighting

REVISIONS		Crew Cab Body Lighting			
NO.	DATE	BY	DATE	SCALE	EQN-120M
1			TOD	N/A	
2			09/28/11	DMA	SHEET 1 OF 1